

# Repair Mode™





© 2023 WELLA OPERATIONS US LLC

# O.P.I

## Application steps

“Do it yourself” at home

 [opiswiss.ch](https://opiswiss.ch)

 [OPI\\_SWISS](https://www.instagram.com/OPI_SWISS)

 [OPISWISS](https://www.facebook.com/OPISWISS)




So Be  
COSMETICS

OPI Switzerland

So Be Cosmetics SA/  
Wella IO Switzerland SARL  
Chemin Louis-Hubert 1  
1213 Petit-Lancy (GE)  
Switzerland

### What is *Repair Mode*™?

*Repair Mode*™ is a **concentrated, deeply penetrating nail serum** to repair and strengthen nails **from the inside**, unlike products on the market to date. The groundbreaking innovation comes from the patented **Ulti-Plex Technology**™ which, when used as directed twice a day for 6 days, provides the following results:

- 
-  99% nail keratin repair
  -  94% protection of keratin protein from damage
  -  4x stronger nails thanks to bond-building inside the nails
- 

**Unisex:** *Repair Mode*™ is a unisex product for everyone. Unlike existing products, it leaves no visible layer of lacquer or shine as it is absorbed by the nail. However, damaged, weakened nails are restructured and unevenness is smoothed out.

**Compatible:** For those who don't want to miss color, *Repair Mode*™ can also be applied under colored lacquer or gel, because the serum is compatible with all our OPI color lines *Infinite Shine*, *Nature Strong*, *Nail Lacquer*, and *GelColor*.

**Complementary:** Thanks to its effect inside the nail, *Repair Mode*™ is an addition to our existing nail strengthener line *Nail Envy*®, which strengthens the surface of the nail.

**Vegan:** *Repair Mode*™ is vegan and therefore contains no animal-derived ingredients or by-products.

**Scientifically and clinically tested:** The *Repair Mode*™ serum was developed by nail scientists and has been clinically tested.

### Why *Repair Mode*™?

"Nail damage happens through daily activities like washing our hands, cleaning, and showering, which break down keratin bonds. Treating nail damage is one of the biggest consumer needs with the lowest product satisfaction", explains Sarah Fairmeny, Vice President, OPI Research & Development.



“Our goal was to revolutionize nail care for weak and damaged nails and to combat everyday damage, by developing a technology that could repair broken bonds from inside the nail.” *Repair Mode™* repairs and protects nails against breaking, chipping, and splitting – for beautiful, strong natural nails.

### How does *Repair Mode™* work?

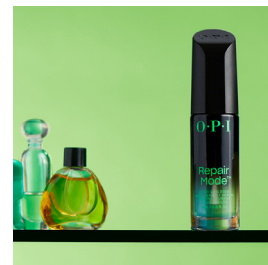
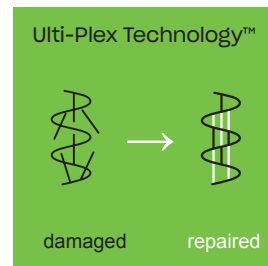
*Repair Mode™* with patented Ulti-Plex Technology™ is the first bond-building nail serum of its kind. Moving beyond temporary surface-level strengthening, *Repair Mode™* penetrates and absorbs into the nail. “Until now, nail strengthening products typically worked by reinforcing the nail with polymer film formers, creating a protective coating over the top of the nail. As soon as the product is removed, so are the strengthening effects. Ulti-Plex Technology™ of *Repair Mode™*, however, penetrates into the nail, building bonds within the damaged keratin to restore and protect.”, continues Sarah Fairney.

Patented Ulti-Plex Technology™ biomimics the protein structure of the natural nail to repair nails from within, to smooth and protect them from everyday damage. Breakthrough *Repair Mode™* repairs and strengthens nails from the inside in a new way, smoothing their imperfections and offering protection from the effects of everyday life. Similar to how Plex products have transformed hair care, *Repair Mode™* is a breakthrough for the nail treatment category. With *Repair Mode™*, fans can experience their natural nails, restored to their optimum condition in a matter of days.

### How is *Repair Mode™* applied?

*Repair Mode™* is applied directly onto the natural nail, is absorbed by it and repairs it from the inside. Depending on personal needs and preferences – with or without coloured lacquer or gel – there are various application options for *Repair Mode™*:

- A. ***Repair Mode™* maximum deep repair in a 6-day treatment, without color:** see application steps on page 4.
- B. ***Repair Mode™* deep repair + long-lasting color:** see application steps on page 5.
- C. ***Repair Mode™* deep repair + strengthening of the nail surface, with color:** see application steps on page 6.





# Application steps

## A. *Repair Mode*™ maximum deep repair in a 6-day treatment, without color

Key product: *Repair Mode*™

- 1. Push back cuticles and file nails:** Apply an amount of *ProSpa Exfoliating Cuticle Cream (ASE20)* the size of a grain of rice to each cuticle, massage gently and leave on for 1-2 minutes. Meanwhile, file the nails into the desired shape, e.g. with the *Edge File 180/400 (FI671)*. Then gently push back cuticles with a cuticle stick.
- 2. Remove filing dust and residues:** Remove any residue on the nail surface with an *Expert Touch Nail Wipe (AC810)* using the cleansing solution *NAS 99 (SD302)* or isopropyl alcohol (available in pharmacies).
- 3. *Repair Mode*™:** Wipe the brush well on the neck of the bottle before applying to drain excess product, because a small amount is enough. Apply a thin layer of *Repair Mode*™ (*NT200*) to the natural nail. The product penetrates the nail and requires no drying time. Finally, apply *ProSpa Cuticle Oil (AS200)* to each cuticle. Apply an additional layer of *Repair Mode*™ morning and evening for 6 days. Since *Repair Mode*™ is absorbed by the nail and works internally, no product removal is required. Repeat if necessary, starting again at step 1.



1a



1b



2



3



3

*Repair Mode*™

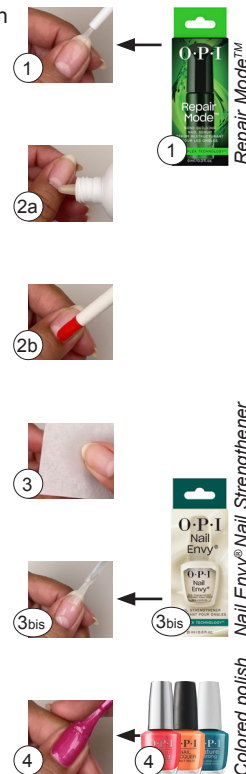
## B. Repair Mode™ deep repair

Key products: *Repair Mode™*

+ long-lasting color

+ *Infinite Shine, Nature Strong or Nail Lacquer*

1. **Repair Mode™: Important:** Wipe the brush well on the neck of the bottle before applying to drain excess product, as too much can reduce the long-lasting result of the color. A small amount is enough to be absorbed by the nail and act internally. Apply a thin layer of *Repair Mode™ (NT200)* to the natural nail. Proceed directly to step 2, but at the same time set a timer for 10 minutes.
2. **Push back cuticles and file nails:** Apply an amount of *ProSpa Exfoliating Cuticle Cream (ASE20)* the size of a grain of rice to each cuticle, massage gently and leave on for 1-2 minutes. Meanwhile, file the nails into the desired shape, e.g. with the *Edge File 180/400 (FI671)*. Then gently push back the cuticles with a cuticle stick.
3. **Remove filing dust and residues:** Remove any residue on the nail surface with an *Expert Touch Nail Wipe (AC810)* using the cleansing solution *NAS 99 (SD302)* or isopropyl alcohol (available in pharmacies).  
Important: For a long-lasting result of the nail polish color, rub each nail well, from the nail bed to the side edges of the nail, to clean it thoroughly.  
**3bis – optional – for additional strengtning of the nail surface with *Nail Envy® Nail Strengthener*:** Between step 1 and this step, 10 minutes must have passed. Apply a coat of transparent *Nail Envy® Nail Strengthener (NTT80)*, allow to dry for 2 minutes and then proceed directly to the nail polish color in step 4.
4. **Long-lasting color with *Infinite Shine, Nature Strong or Nail Lacquer*:** Between step 1 and this step, 10 minutes must have passed. Apply a thin layer of Base Coat from the desired nail polish line, followed by a thin layer of nail polish color. Allow to dry for 2 minutes and apply a second layer of nail polish color. Then apply a layer of Top Coat from the desired line. Finally, apply *ProSpa Cuticle Oil (AS200)* to each cuticle.  
*Repair Mode™* is also compatible with the professional line *GelColor*. Contact our official partners to treat yourself to a professional application of *Repair Mode™* with *GelColor*.



## C. Repair Mode™ deep repair

Key products: *Repair Mode™*

+ strengthening of the nail surface, with color

+ *Nail Envy® Strength + Color*

1. **Repair Mode™: Important:** Wipe the brush well on the neck of the bottle before applying to drain excess product, as too much can reduce the long-lasting result of the color. A small amount is enough to be absorbed by the nail and act internally. Apply a thin layer of *Repair Mode™ (NT200)* to the natural nail. Proceed directly to step 2, but at the same time set a timer for 10 minutes.
2. **Push back cuticles and file nails:** Apply an amount of *ProSpa Exfoliating Cuticle Cream (ASE20)* the size of a grain of rice to each cuticle, massage gently and leave on for 1-2 minutes. Meanwhile, file the nails into the desired shape, e.g. with the *Edge File 180/400 (FI671)*. Then gently push back the cuticles with a cuticle stick.
3. **Remove filing dust and residues:** Remove any residue on the nail surface with an *Expert Touch Nail Wipe (AC810)* using the cleansing solution *NAS 99 (SD302)* or isopropyl alcohol (available in pharmacies). **Important:** For a long-lasting result of *Nail Envy® Strength + Color*, rub each nail well, from the nail bed to the side edges of the nail, to clean it thoroughly.
4. **Nail Envy® Strength + Color:** Between step 1 and this step, 10 minutes must have passed. Select the desired color of *Nail Envy® Strength + Color (NT222-NT229)*. For dark colors, it is recommended to apply a layer of transparent *Nail Envy® Nail Strengthener (NTT80)* beforehand to protect the nail from staining. For light colors, apply a thin layer of *Nail Envy® Strength + Color* directly onto the nail. Allow to dry for 2 minutes and apply a second layer. Finally, apply *ProSpa Cuticle Oil (AS200)* to each cuticle. Apply an additional coat of *Nail Envy® Strength + Color* the following day and do this each day for the 5 following days. Remove on day 7 with nail polish remover. Repeat if necessary, starting again at step 1.

